

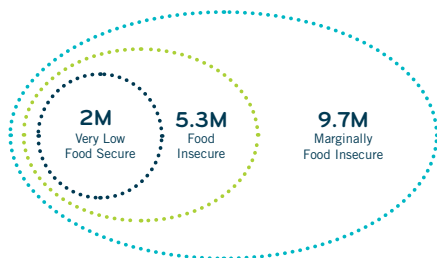


This holiday season, we hope you'll *Share the Love* by supporting vulnerable seniors nationwide.

**TOO MANY SENIORS ARE LEFT BEHIND, ALONE AND HUNGRY, STRUGGLING TO STAY INDEPENDENT AND HEALTHY.**

**NEARLY 9.7 MILLION SENIORS ARE THREATENED BY HUNGER**

5.3M of which are food insecure or very low food secure.



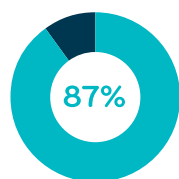
**NEARLY 7.4 MILLION SENIORS LIVE IN POVERTY**

THAT'S AN INCOME OF \$234 A WEEK OR LESS, which, after housing, utility and medical expenses, leaves very little for food

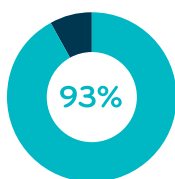


**1 IN 4 SENIORS LIVES ALONE**

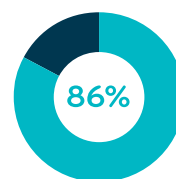
**MEALS ON WHEELS DELIVERS THE SUPPORT THAT KEEPS SENIORS IN THEIR HOMES, WHERE THEY WANT TO BE.**



say it makes them feel more safe and secure



say it enables them to remain living at home



say it improves their health

Over the last 12 years, Subaru and its retailers have helped the Meals on Wheels network deliver more than **2.3 MILLION MEALS** to seniors in need across the country.

You can help that number grow when you buy or lease a new Subaru during the 2020 Subaru Share the Love Event, November 19, 2020, to January 4, 2021. Through this year this year-end sales event, Subaru of America will donate \$250 to your selected charity — and we hope you'll choose Meals on Wheels.



**LEARN MORE AT [WWW.MEALSONWHEELSAMERICA.ORG/SHARETHELOVE](http://WWW.MEALSONWHEELSAMERICA.ORG/SHARETHELOVE).**